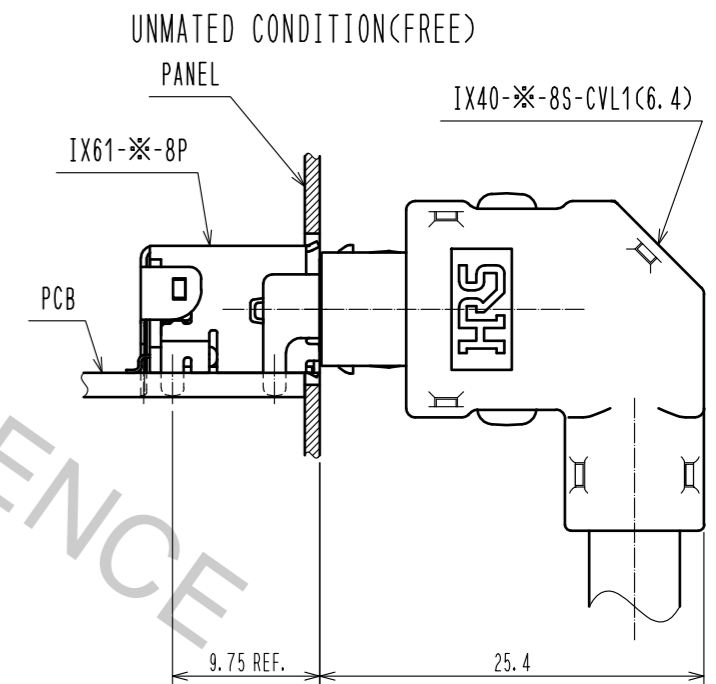
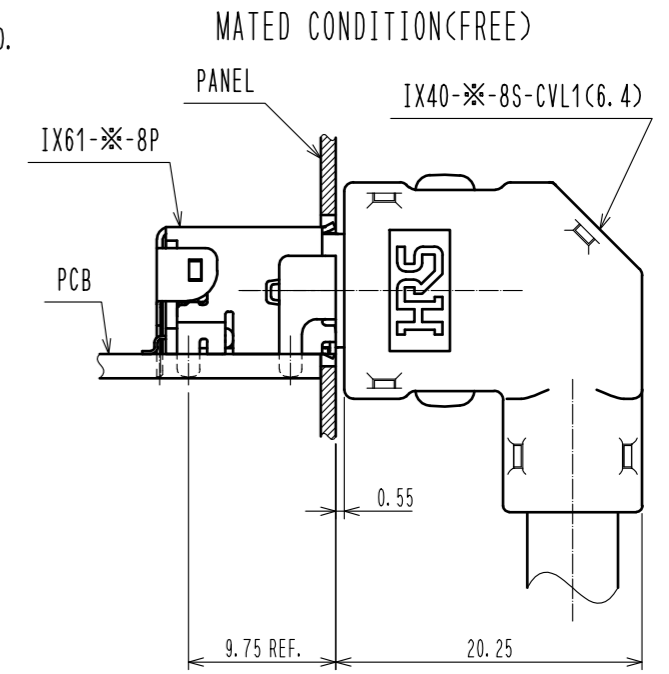
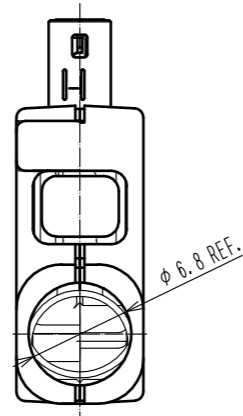
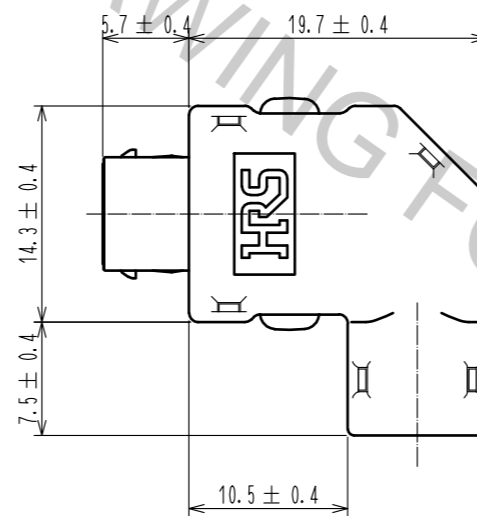
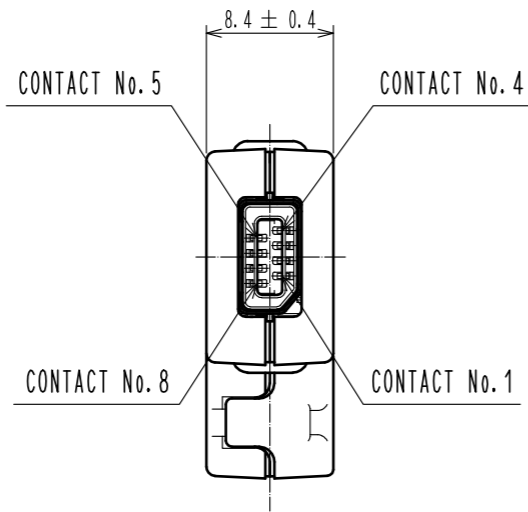
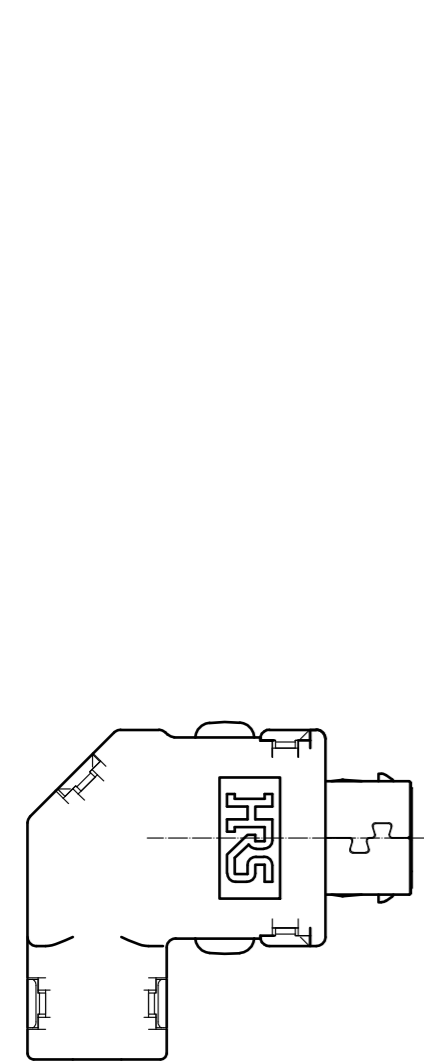


NOTES. 1 THIS PRODUCT, EXCEPT PLUG UNIT AND SHIELD CASE UNIT A1, ARE PACKED SEPARATELY BY THE TYPES OF PARTS.

2. RECOMMENDED CABLE IS HITACHI METALS CO., LTD. UL20276-SB 4PX28AWG (7/0.127) LF.
PLEASE REFER TO THE TECHNICAL SPECIFICATION SHEET ETAD-E3143 ABOUT CABLE ASSEMBLY METHOD.

3 BUILT-IN DIRECTION OF THE PART NO. 3, THERE ARE TWO DIRECTIONS TO BE SHOWN.
THERE IS NO PROBLEM IN THE PERFORMANCE IN EITHER CASE.



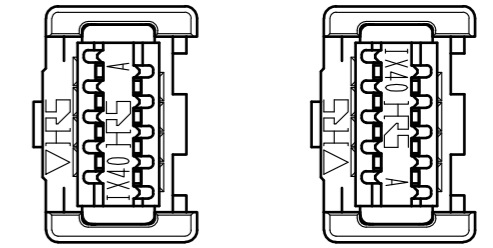
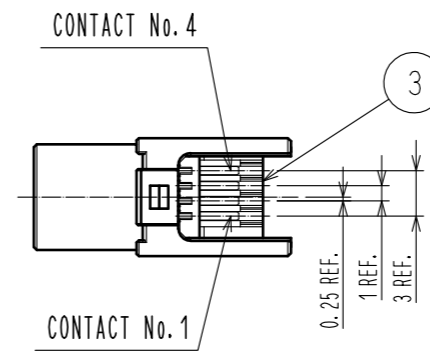
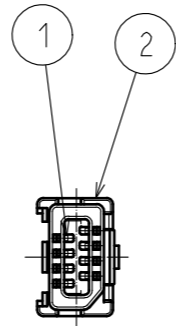
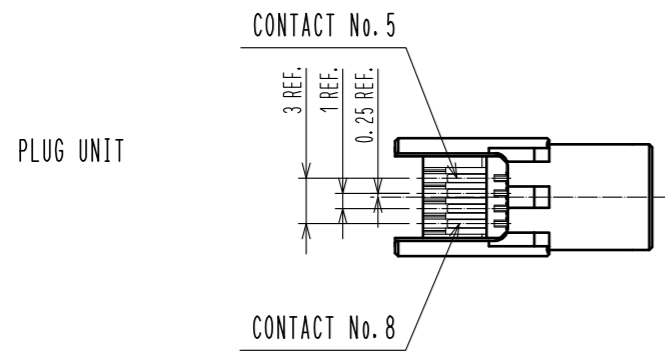
4	STAINLESS STEEL	NICKEL 2 μm min.	9	PC	BLACK, UL94V-0		
3	LCP	BLACK, UL94V-0	8	PC	BLACK, UL94V-0		
2	PA	BLACK, UL94V-0	7	PBT	BLACK, UL94V-0		
1	COPPER ALLOY	CONTACT AREA : GOLD 0.2 μm min. LEAD AREA : GOLD 0.03 μm min. UNDER PLATING : NICKEL 2 μm min.	6	STAINLESS STEEL	NICKEL 2 μm min.		
			5	STAINLESS STEEL	NICKEL 2 μm min.		
NO.	MATERIAL	FINISH . REMARKS	NO.	MATERIAL	FINISH . REMARKS		
UNITS	mm	SCALE	COUNT	DESCRIPTION OF REVISIONS	DESIGNED	CHECKED	DATE
		2 : 1	△	APPROVED : NM. NISHIMATSU 15.12.08			
HIROSE ELECTRIC CO., LTD.		DRAWING NO.		EDC-128632-00-00			
		CHECKED : NM. NISHIMATSU 15.12.08		PART NO.		IX40-A-8S-CVL1(6.4)	
		DESIGNED : TS. SAKAIZAWA 15.12.08		CODE NO.		CL251-0002-5-00	
		DRAWN : TS. SAKAIZAWA 15.12.08				1/2	

Sep.1.2017 Copyright 2017 HIROSE ELECTRIC CO., LTD. All Rights Reserved.

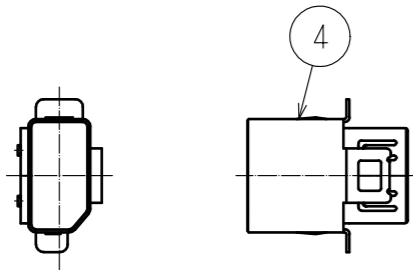
Sep.1.2017 Copyright 2017 HIROSE ELECTRIC CO., LTD. All Rights Reserved.

1 PACKING COMPOSITION

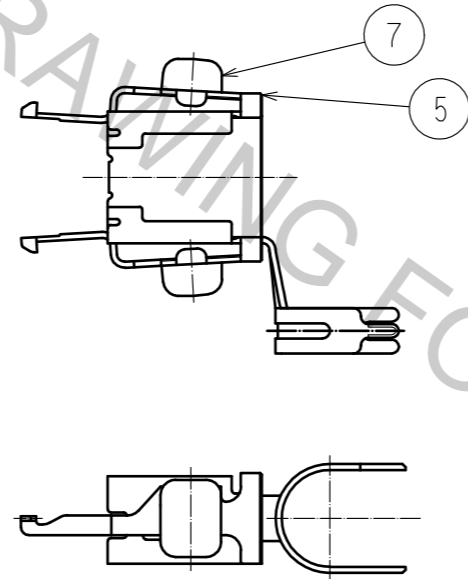
3 DIRECTION OF THE PART NO.3(FREE)



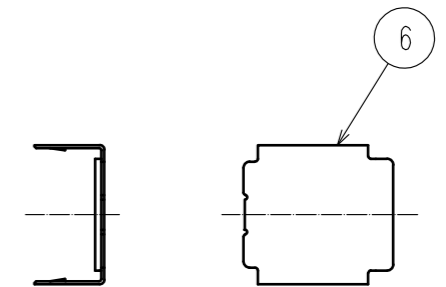
S SHELL



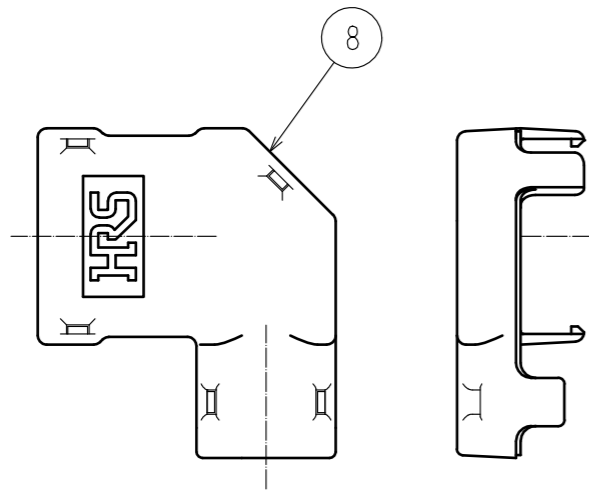
SHIELD CASE UNIT A1



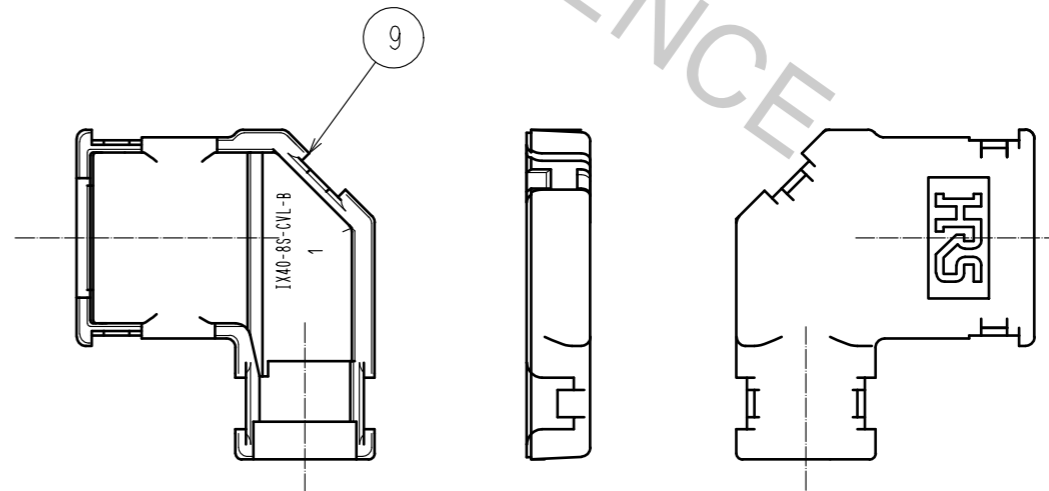
SHIELD CASE B

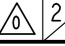


COVER CASE A



COVER CASE B



HRS	DRAWING NO.	EDC-128632-00-00		2/2
	PART NO.	IX40-A-8S-CVL1(6.4)		
	CODE NO.	CL251-0002-5-00		