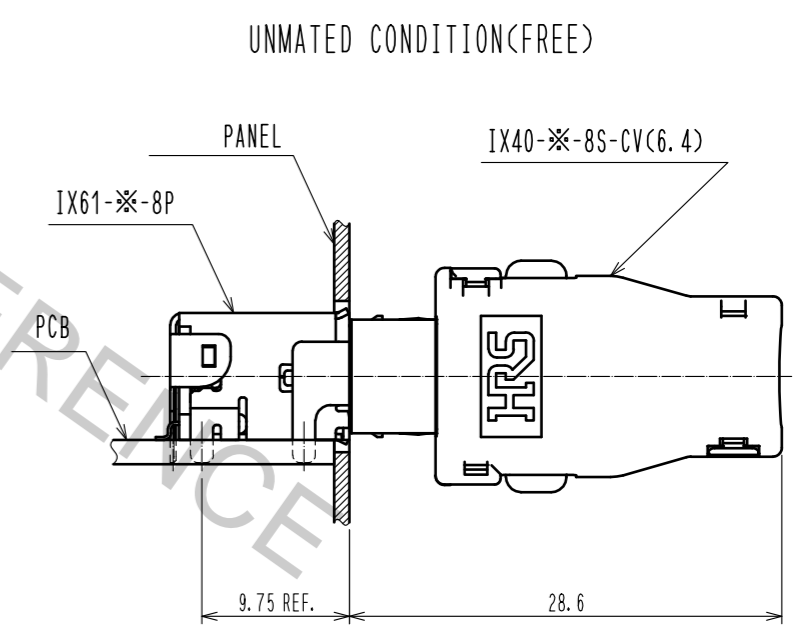
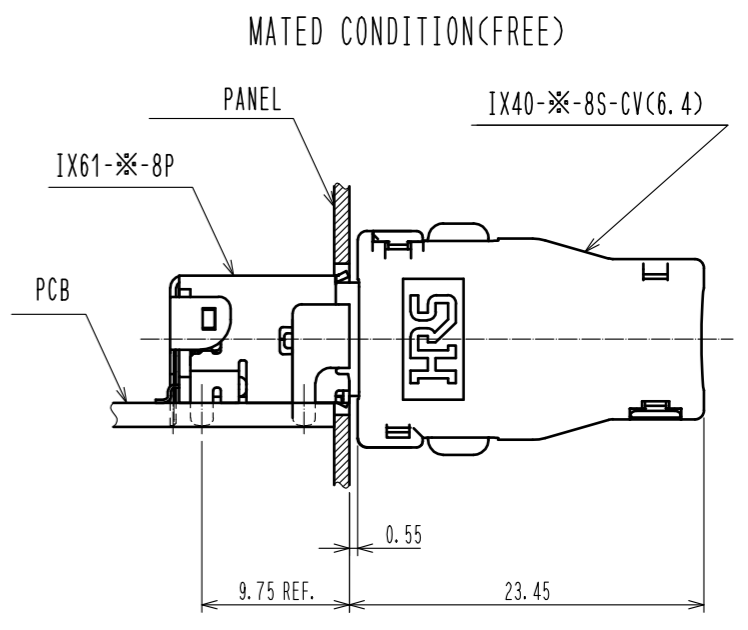
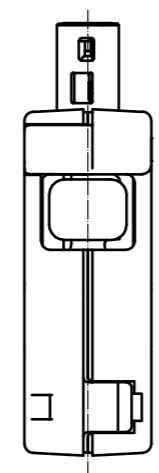
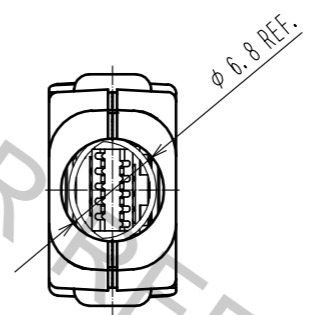
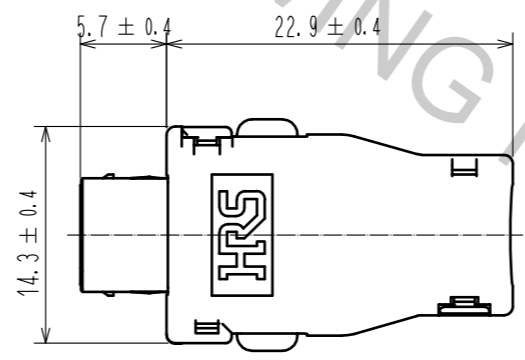
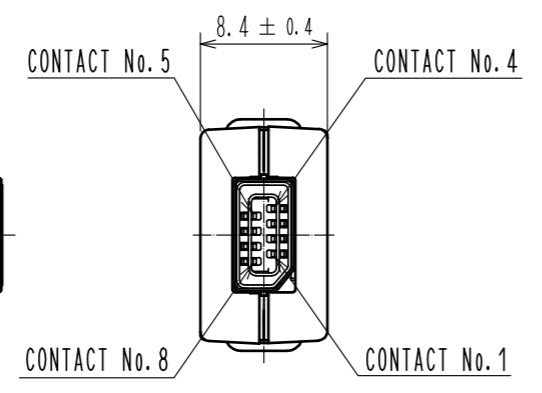


Sep.1.2017 Copyright 2017 HIROSE ELECTRIC CO., LTD. All Rights Reserved.

NOTES. 1 THIS PRODUCT, EXCEPT PLUG UNIT AND SHIELD CASE UNIT A, ARE PACKED SEPARATELY BY THE TYPES OF PARTS.

2. RECOMMENDED CABLE IS HITACHI METALS CO., LTD. UL20276-SB 4PX28AWG (7/0.127) LF.  
PLEASE REFER TO THE TECHNICAL SPECIFICATION SHEET ETAD-E3146-00 ABOUT CABLE ASSEMBLY METHOD.

3 BUILT-IN DIRECTION OF THE PART NO.3, THERE ARE TWO DIRECTIONS TO BE SHOWN.  
THERE IS NO PROBLEM IN THE PERFORMANCE IN EITHER CASE.

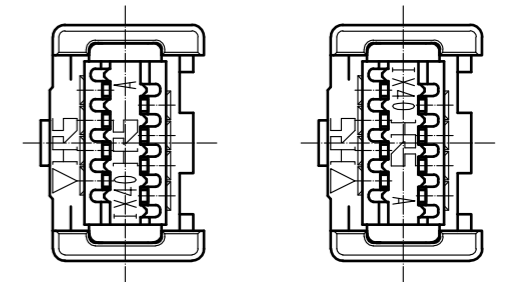
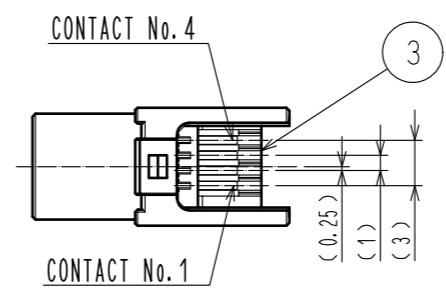
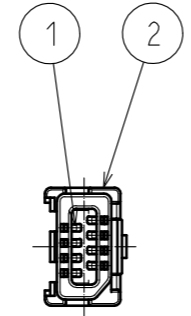
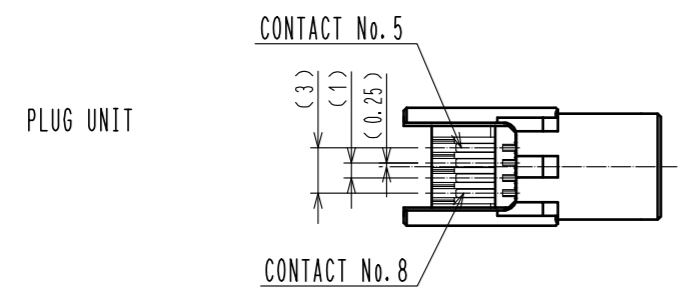


3	LCP	BLACK, UL94V-0	8	PC	BLACK, UL94V-0
2	PA	BLACK, UL94V-0	7	PBT	BLACK, UL94V-0
1	COPPER ALLOY	CONTACT AREA : GOLD 0.2 μm min.	5	STAINLESS STEEL	NICKEL 2 μm min.
		LEAD AREA : GOLD 0.03 μm min.	4	STAINLESS STEEL	NICKEL 2 μm min.
		UNDER PLATING : NICKEL 2 μm min.			
NO.	MATERIAL	FINISH . REMARKS	NO.	MATERIAL	FINISH . REMARKS

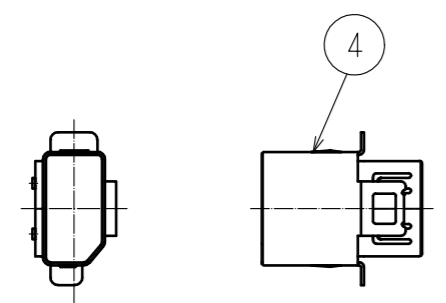
UNITS mm		SCALE 2 : 1	COUNT 	DESCRIPTION OF REVISIONS	DESIGNED	CHECKED	DATE
		HIROSE ELECTRIC CO., LTD.		APPROVED : NM. NISHIMATSU 15.12.10	DRAWING NO. EDC3-128749-00		
				CHECKED : NM. NISHIMATSU 15.12.10	PART NO. IX40-A-8S-CV(6.4)		
				DESIGNED : P. EKSOURIYA 15.12.10	CODE NO. CL251-0004-0-00		
				DRAWN : P. EKSOURIYA 15.12.10			

1 PACKING COMPOSITION

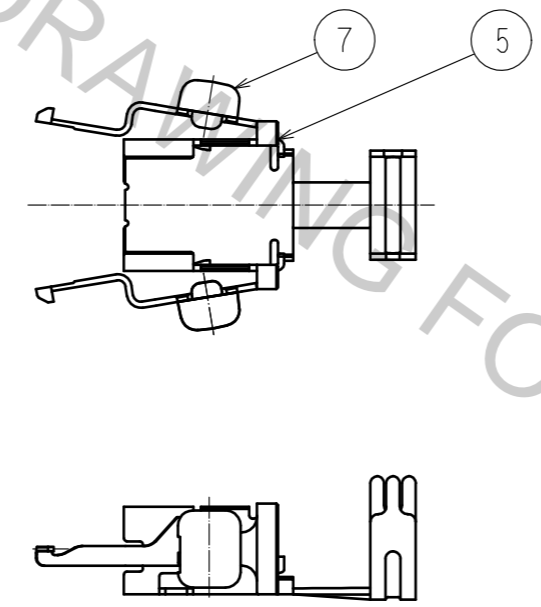
3 DIRECTION OF THE PART NO.3(FREE)



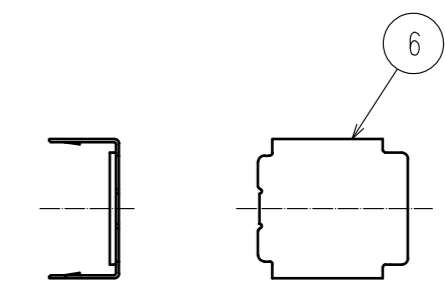
S SHELL



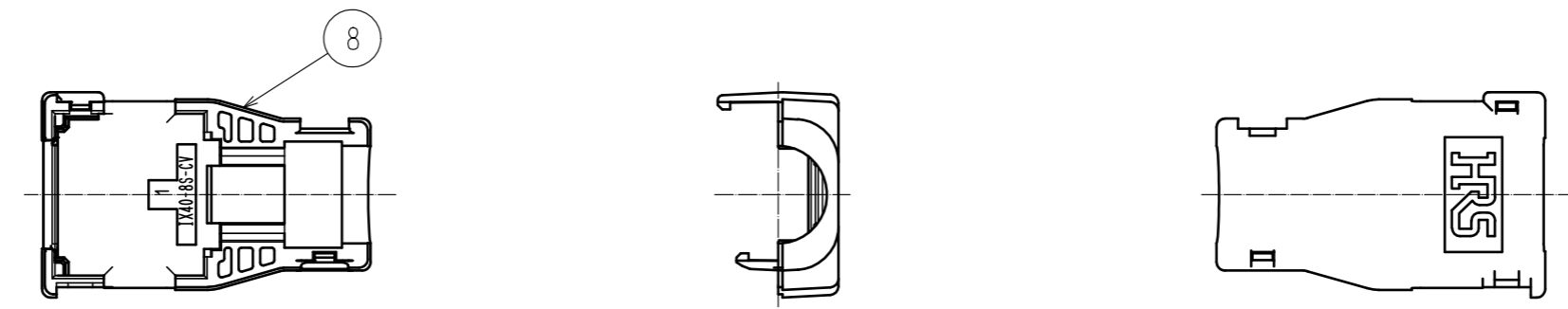
SHIELD CASE UNIT A



SHIELD CASE B



COVER CASE A



HRS DRAWING FOR REFERENCE

<b>HRS</b>	DRAWING NO.	EDC3-128749-00	2/2
	PART NO.	IX40-A-8S-CV(6.4)	
	CODE NO.	CL251-0004-0-00	