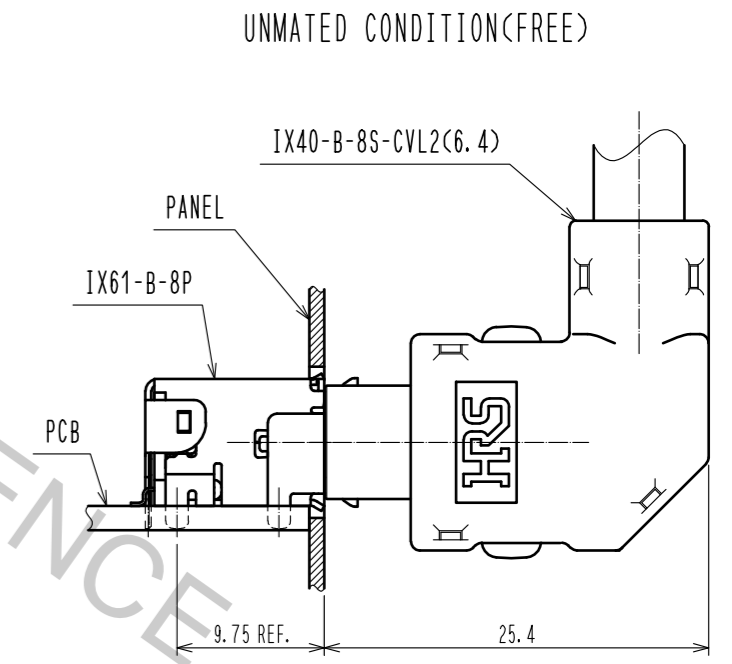
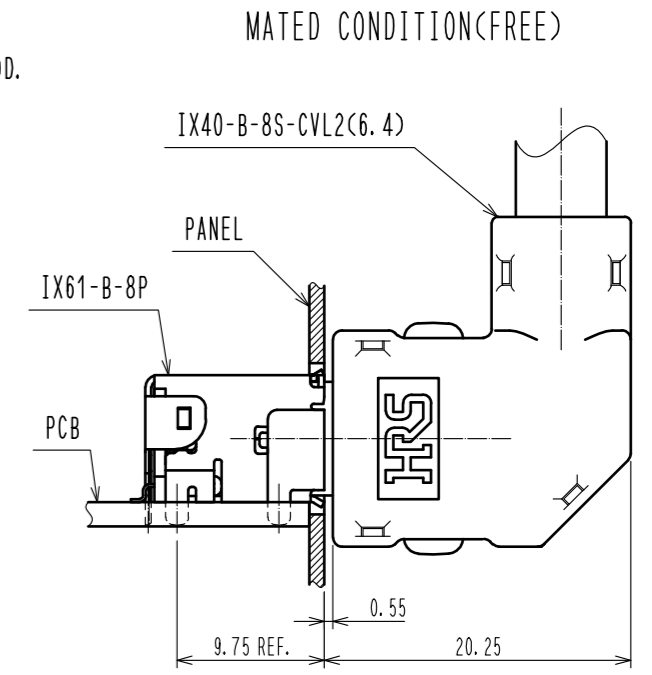
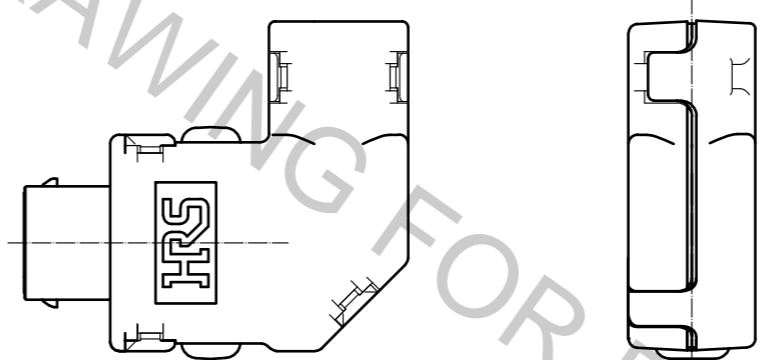
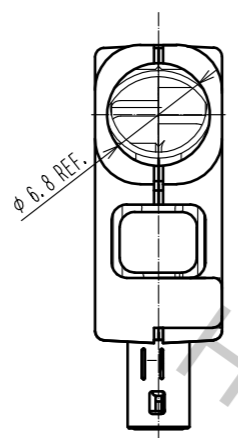
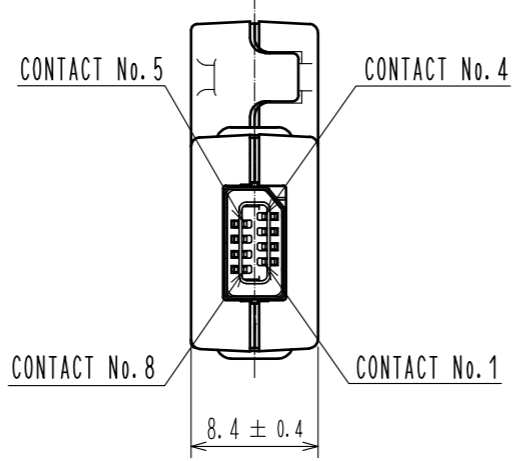
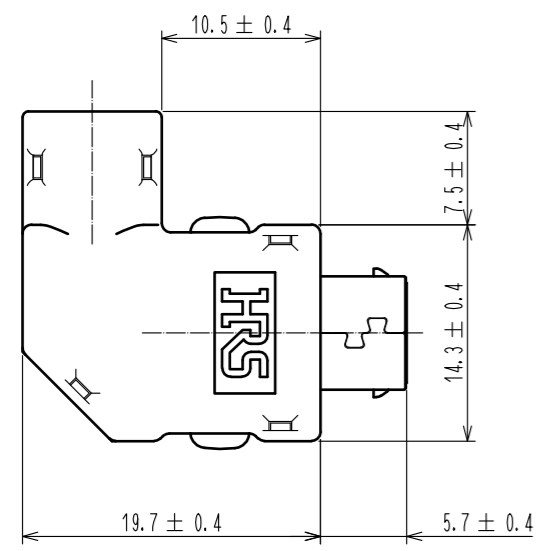


Sep.1.2017 Copyright 2017 HIROSE ELECTRIC CO., LTD. All Rights Reserved.

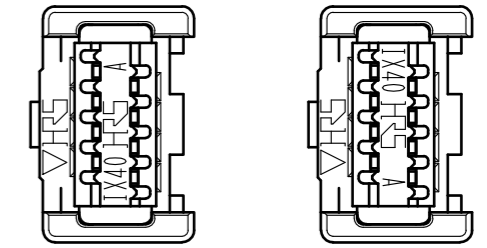
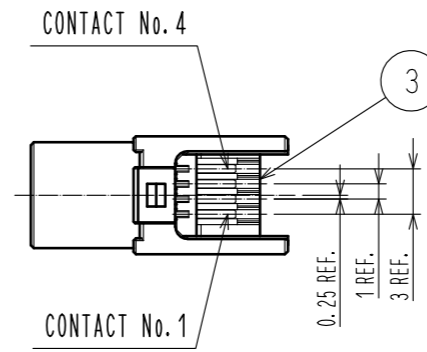
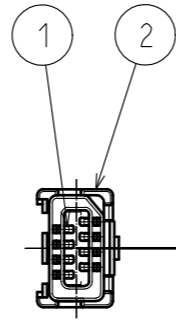
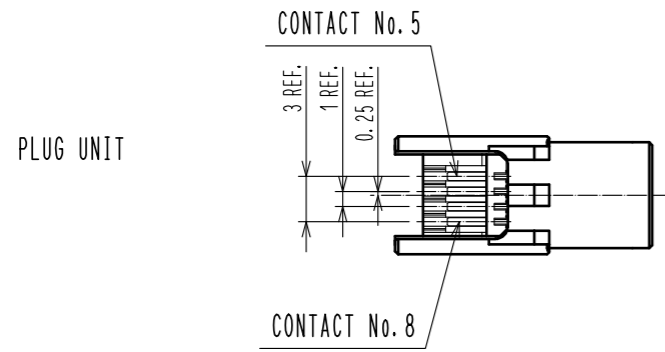
NOTES. 1 THIS PRODUCT, EXCEPT PLUG UNIT AND SHIELD CASE UNIT A1, ARE PACKED SEPARATELY BY THE TYPES OF PARTS.
 2. RECOMMENDED CABLE IS HITACHI METALS CO., LTD. UL20276-SB 4PX28AWG (7/0.127) LF. PLEASE REFER TO THE TECHNICAL SPECIFICATION SHEET ETAD-E3143 ABOUT CABLE ASSEMBLY METHOD.
 3 BUILT-IN DIRECTION OF THE PART NO.3, THERE ARE TWO DIRECTIONS TO BE SHOWN. THERE IS NO PROBLEM IN THE PERFORMANCE IN EITHER CASE.



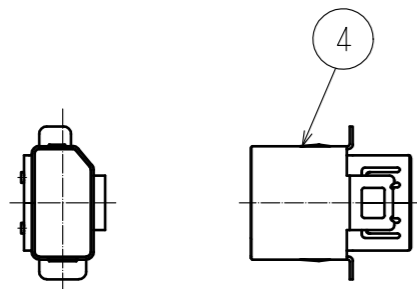
4	STAINLESS STEEL	NICKEL 2 μm min.	9	PC	BLACK, UL94V-0			
3	LCP	BLACK, UL94V-0	8	PC	BLACK, UL94V-0			
2	PA	BLACK, UL94V-0	7	PBT	BLACK, UL94V-0			
1	COPPER ALLOY	CONTACT AREA : GOLD 0.2 μm min.	6	STAINLESS STEEL	NICKEL 2 μm min.			
		LEAD AREA : GOLD 0.03 μm min.	5	STAINLESS STEEL	NICKEL 2 μm min.			
	UNDER PLATING : NICKEL 2 μm min.							
NO.	MATERIAL	FINISH . REMARKS	NO.	MATERIAL	FINISH . REMARKS			
UNITS mm		SCALE 2 : 1	COUNT 	DESCRIPTION OF REVISIONS		DESIGNED	CHECKED	DATE
HRS HIROSE ELECTRIC CO., LTD.		APPROVED : NM. NISHIMATSU 16.05.14	DRAWING NO. EDC-129116-00-00					
		CHECKED : NM. NISHIMATSU 16.05.14	PART NO. IX40-B-8S-CVL2(6.4)					
		DESIGNED : P. EKSOURIYA 16.05.14	CODE NO. CL251-0010-0-00					
		DRAWN : P. EKSOURIYA 16.05.14						

1 PACKING COMPOSITION

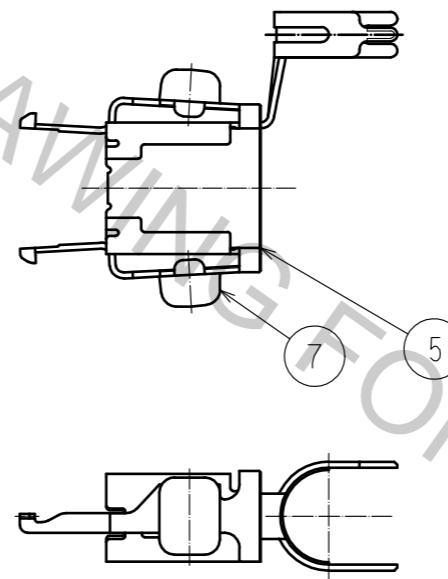
3 DIRECTION OF THE PART No. 3(FREE)



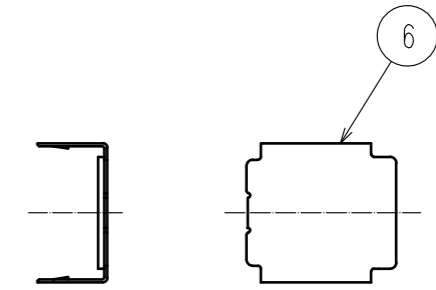
S SHELL



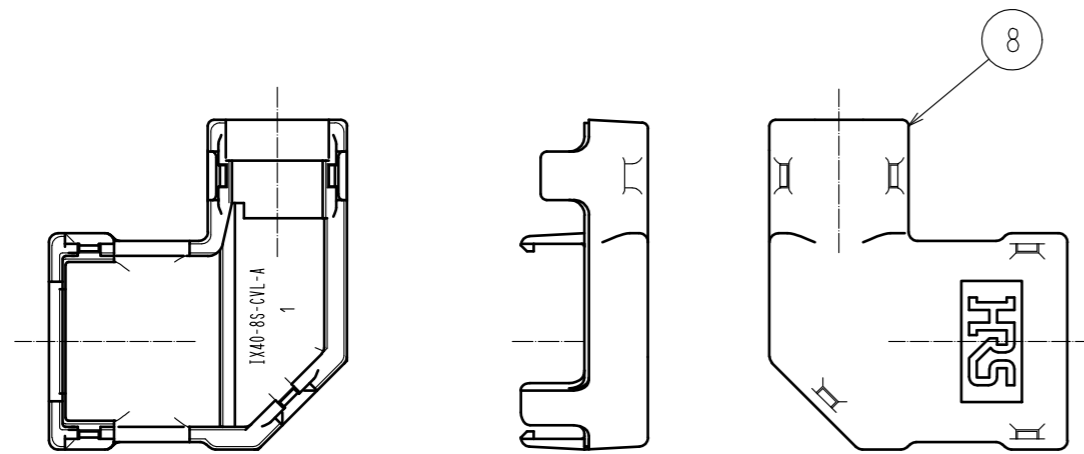
SHIELD CASE A2 UNIT



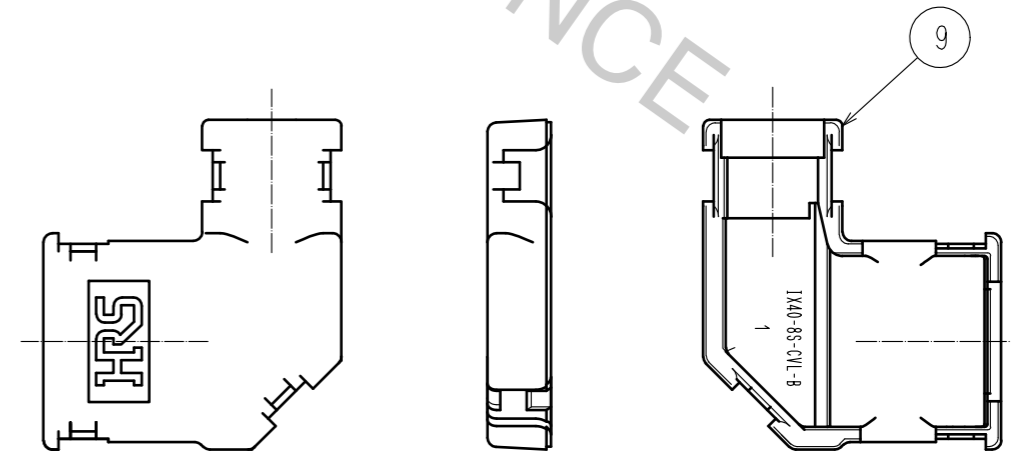
SHIELD CASE B



COVER CASE A



COVER CASE B



HRS	DRAWING NO.	EDC-129116-00-00	2/2
	PART NO.	IX40-B-8S-CVL2(6.4)	
	CODE NO.	CL251-0010-0-00	