

HIROSE has a wide product portfolio of technically advanced ultra small connectors that incorporate the latest innovative technology.

This range of connectors offers excellent connectivity solutions for miniature devices needing small footprints and low height profiles.

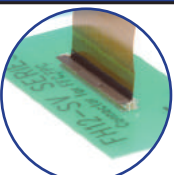
These include Wire-to-Board, Board-to-Board, interface, FFC/FPC, coaxial connectors and others.

HIROSE is one of the world leading manufacturers of downsized connectors featuring some of the finest pitches and ultra low profile stack heights in the industry.

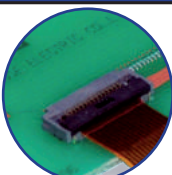


### HRS Products for compact devices

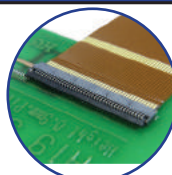
#### FPC/FFC Connectors



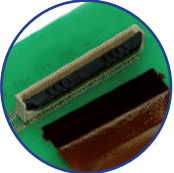
FH12SV



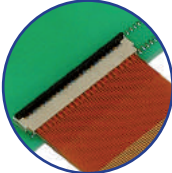
FH52



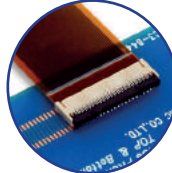
FH34SRJ



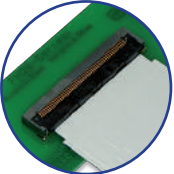
FH40



FH35C



FH58/FH58M



FH28



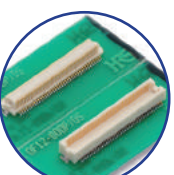
FH63



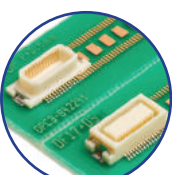
FH65

	Pitch (mm)	Height (mm)	Depth (mm)	Pin Count	Max. Rated Current (A)
FH12SV (vertical)	0.5/1.0	4.85	3.80	10 to 60	0.5
FH52	0.5/1.0	2.00	5.70	6 to 60	0.5
FH34SRJ	0.5	1.0	3.80	4 to 50	0.5
FH40 (vertical)	0.5	5.80	3.55	10 to 80	0.5
FH35C	0.3	0.9	4.20	9 to 61	0.2
FH58/FH58M	0.2/0.25	0.9	3.10	7 to 71	0.2
FH28	0.5	2.55	6.40	10 to 80	0.5
FH63	0.5	2.8	5.15	30	0.5
FH65	0.5	1.2	3.57	34	0.5

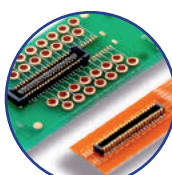
#### Board-to-Board Connectors



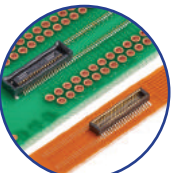
DF12



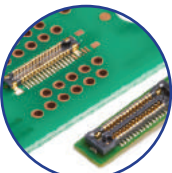
DF17



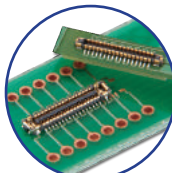
BM20



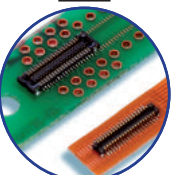
DF40



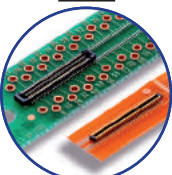
BM24



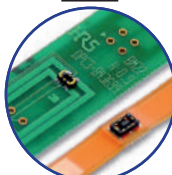
BM28



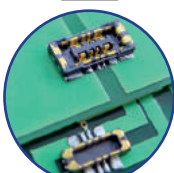
BM10



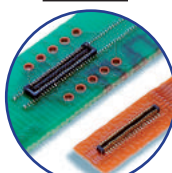
BM15FR



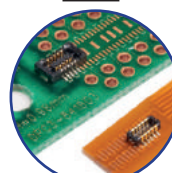
BM22



BM25



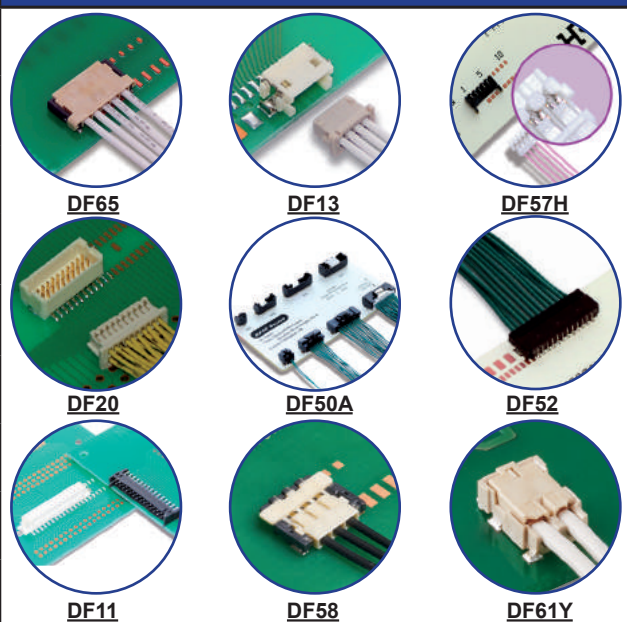
BM14



DF37

	Pitch (mm)	Stacking Height (mm)	Depth (mm)	Pin Count	Max. Rated Current (A)
DF12	0.5	3.0 to 5.0	4.60	10 to 80	0.3
DF17	0.5	4.0 to 8.0	5.70	20 to 80	0.3
BM20	0.4	0.6, 0.8	2.3	10 to 60	0.3
DF40	0.4	1.5 to 4.0	3.38	10 to 100	0.3
BM24	0.35	0.8	2.3	10 to 40	0.25 for signal 5 for power
BM28	0.35	0.6	1.7	6 to 60	0.3 for signal 4 for power
BM10	0.4	0.6, 0.8	2.98	10 to 60	0.3
BM15FR	0.35	0.7, 0.8	1.58	10 to 30	0.3
BM22	0.4	0.9	2.64	4, 6	0.3 for signal 4 for power
BM25	0.4	0.7	2.60	6 (4 signal & 2 power)	0.3 for signal 10 for power
BM14	0.4	0.8, 1.3	1.98	10 to 64	0.3
DF37	0.4	0.98, 1.5	2.98	10 to 74	0.3

## Board-to-Wire Connectors



	Pitch (mm)	Height (mm)	Depth (mm)	Pin Count	Max. Rated Current (A)
<b>DF65</b> (positive lock)	1.7	Vertical: 1.80	6.30	3 to 7	4.0
<b>DF13</b> (SMT Type)	1.25 Single-row	Vertical: 5.80 Horizontal: 3.60	V: 3.40 H: 6.00	2 to 15	1.0
<b>DF57H</b> (swing lock)	1.2	Vertical: 1.40	4.65	2 to 6	2.5
<b>DF20</b>	1.0 Double-row	Vertical: 5.80 Horizontal: 5.50	V: 5.40 H: 6.20	10 to 50	1.0
<b>DF50A</b> (positive lock)	1.0 Single-row	Vertical: 7.35 Horizontal: 7.05	V: 6.85 H: 7.90	2 to 16	1.0
<b>DF52</b>	0.8	Horizontal: 1.75	4.10	2 to 20	2.5
<b>DF11</b>	2.0	7.55 to 8.45	5.00	4 to 40	2.0
<b>DF58</b>	1.2	1.0	4.92	2 to 6	3.0
<b>DF61Y</b>	2.2	2.0	7.35	2	4.0

## Micro Coaxial Connectors



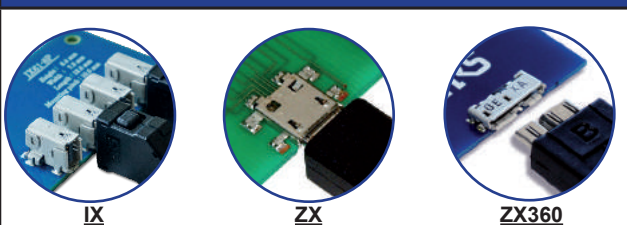
	Frequency (GHz)	Occupied Mounting Area (mm)	Max. Stacking Height (A)
<b>U.FL</b>	DC to 6	3.0 x 3.1	2.0, 2.5
<b>W.FL</b>	DC to 6	2.0 x 2.0	1.65, 1.4
<b>W.FL2</b>	DC to 6	2.0 x 2.0	1.18
<b>X.FL</b>	DC to 6 DC to 12 (low loss)	2.0 x 2.0	1.0 1.3 (low loss)

## Micro Coaxial Switches



	Frequency (GHz)	Occupied Mounting Area (mm)	Max. Height (A)
<b>MS-156C3</b>	DC to 11	2.3 x 2.3	1.35
<b>MS-180</b>	DC to 11	1.8 x 1.8	0.85
<b>MS-190</b>	DC to 11	1.45 x 1.45	0.68

## I/O Connectors



### Switches

A wide range of switches are available from HIROSE. The range includes snap-action, panel mount & line interrupt, rocker and signal switches. Electro static sensors are also available. Please click here to see the full range of switches



# CONNECTING THE FUTURE

[www.hirose.com/eu](http://www.hirose.com/eu)

[info@hiroseeurope.eu](mailto:info@hiroseeurope.eu)